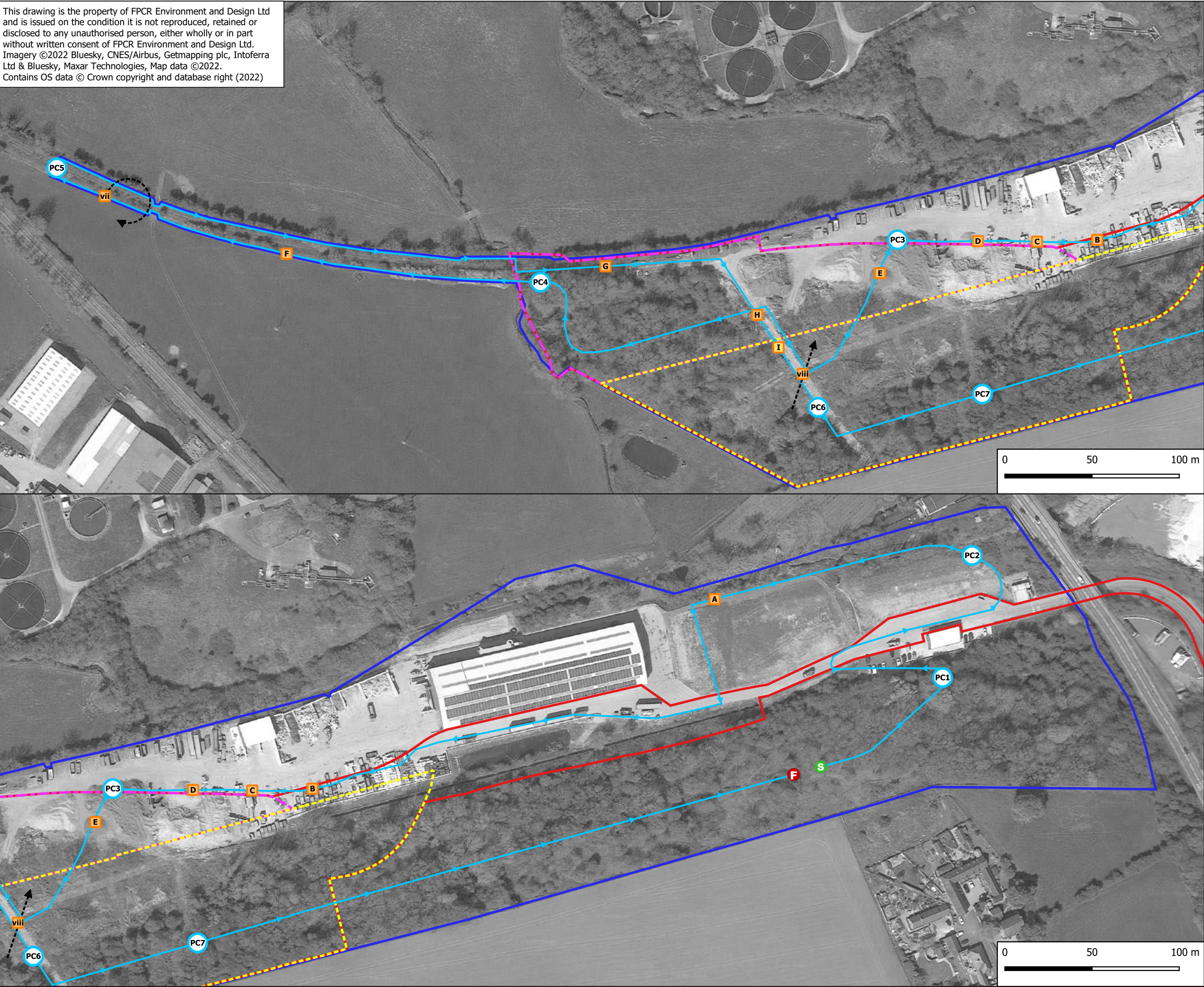


This drawing is the property of FPCR Environment and Design Ltd and is issued on the condition it is not reproduced, retained or disclosed to any unauthorised person, either wholly or in part without written consent of FPCR Environment and Design Ltd. Imagery ©2022 Bluesky, CNES/Airbus, Getmapping plc, Intoferra Ltd & Bluesky, Maxar Technologies, Map data ©2022. Contains OS data © Crown copyright and database right (2022)



Key

- SRRP Planning Application Red Line Boundary
- Ecology Survey Area
- Aggregate Recovery Facility (ARF) Boundary
- Energy Recovery Facility (ERF) Boundary

Start point

Start Point

Point Count Location (with reference)

Transect Route

Bat Contact (with reference\*)

Common Pipistrelle

Soprano Pipistrelle

Flight Path

Date	20/08/2021
Start Time	03:54
End Time	05:54
Sunrise	05:54
Start Temp	15C
End Temp	15C
Cloud Cover	80%
Wind	0
Rain	0

Ref.	Time	Species	Behaviour	Passes	Comments
PC1	04:00 - 04:05	No Bats			
PC2	04:10 - 04:15				
i	04:12	C.pip	Pass	1	NV
A	04:17	C.pip	Pass	1	NV
B	04:25	C.pip	Pass	4	NV
C	04:27	C.pip	Pass	1	NV
D	04:28	C.pip	Pass	3	NV
PC3	04:30 - 04:35				
ii	04:30	S.pip x2	Pass	2	NV
iii	04:30	C.pip x2	Pass	2	NV
iv	04:32	Pip.sp.	Social Calls	2	NV
E	04:36	C.pip	Pass	1	NV
PC4	04:40 - 04:45				
v	04:40	C.pip	Pass	1	NV
vi	04:42	S.pip	Pass	1	NV
F	04:48	C.pip	Pass	1	NV
PC5	04:51 - 04:56				
vii	04:51	C.pip	Foraging	3	
G	05:02	C.pip; S.pip	Pass	1	NV
H	05:07	C.pip	Pass	1	NV
I	05:08	S.pip	Pass	1	NV
PC6	05:10 - 05:15				
viii	05:10	C.pip	Commuting	1	
ix	05:12	C.pip	Pass	1	NV
x	05:21	C.pip	Pass	1	NV
PC7	05:43 - 05:48	No Bats			

\* Lower case numerals denote bat contact within point count

A	29.09.22	Minor amendments	NJL/NJL
-	21.02.22	Initial draft	LG/NJL
rev	date	comment	dmn/chk



client  
**R&P Clean Power Limited**

project  
**Swadlincote Resource Recovery Park (SRRP)**

drawing title  
**BAT TRANSECT SURVEY - AUGUST 2021 (DAWN)**



drawing / figure number  
**7233-ES-8.5-05b**

Date printed  
29/9/2022